

|||  
INTEROPA  
**51**  
*years*  
CELEBRATION  
Est 1974

# WALES REWARDED: Nature Energy and Exclusivity

3 DAYS | 2 NIGHTS

CARDIFF • BREACON BEACONS • CAERPHILLY • RHONDDA

*Reward through nature and heritage  
Energy shaped by landscape  
Exclusive Welsh experiences*

This programme is a compact and rewarding journey through Wales dynamic landscapes and heritage, designed to deliver high impact experiences within a short timeframe. Combining natural beauty, cultural depth and refined dining, the journey offers a seamless balance of exclusivity and discovery.

An Interopa Curated Journey

## The Grand Tour at a Glance

A focused journey through South Wales connecting capital heritage, natural landscapes and industrial legacy. Designed for seamless operations, efficient pacing and high impact experiences.

### Programme Overview

#### Duration

3 Days | 2 Nights

#### Routing

Cardiff | Brecon Beacons | Caerphilly | Rhondda

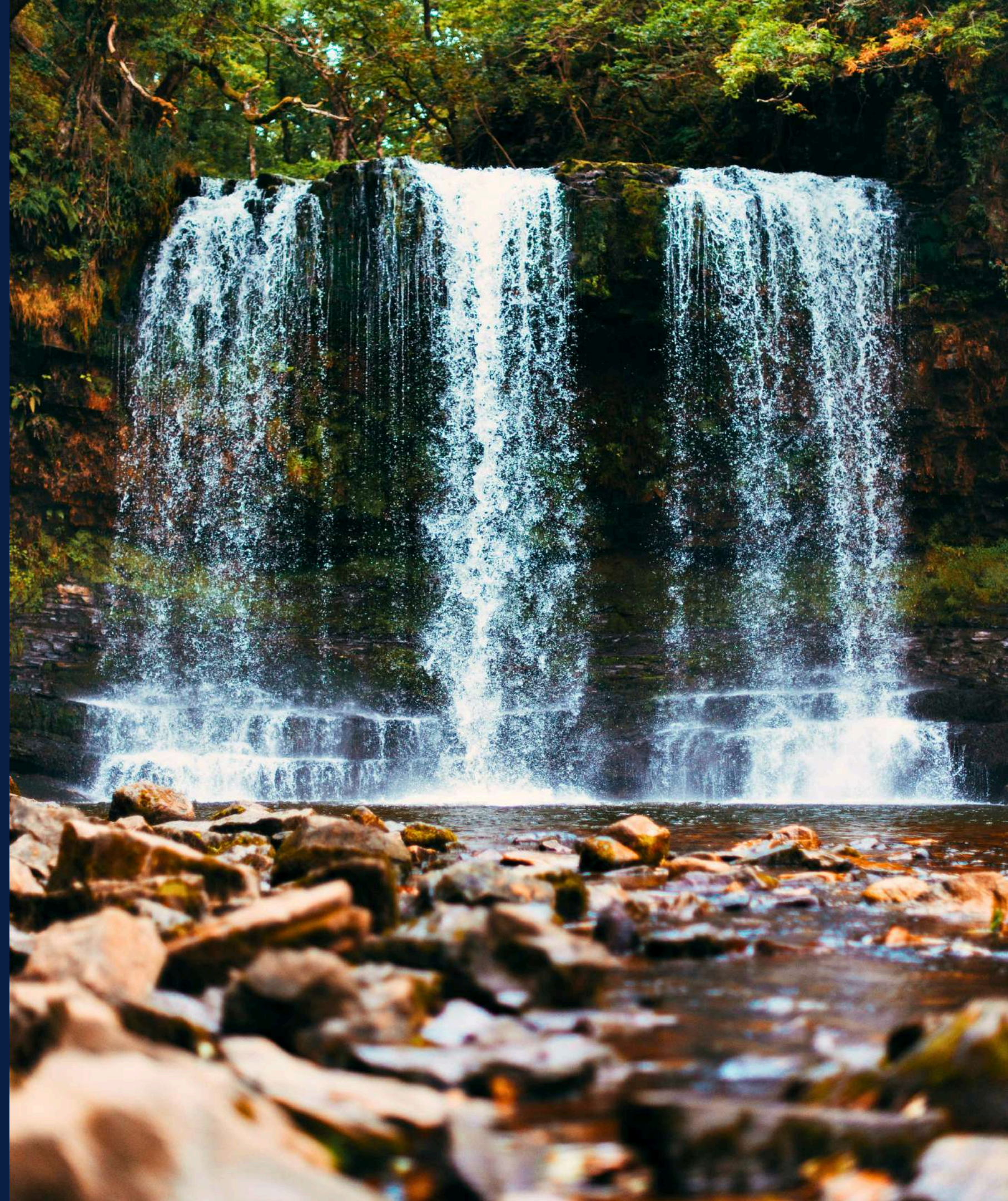
#### Programme Classification

Compact cultural and nature discovery with premium touring comfort

#### Perfect for

Incentive groups | Corporate rewards | Adult groups | Cultural travellers

Designed for structured series departures and culturally engaged travellers.



## Day by Day Programme

### DAY 1

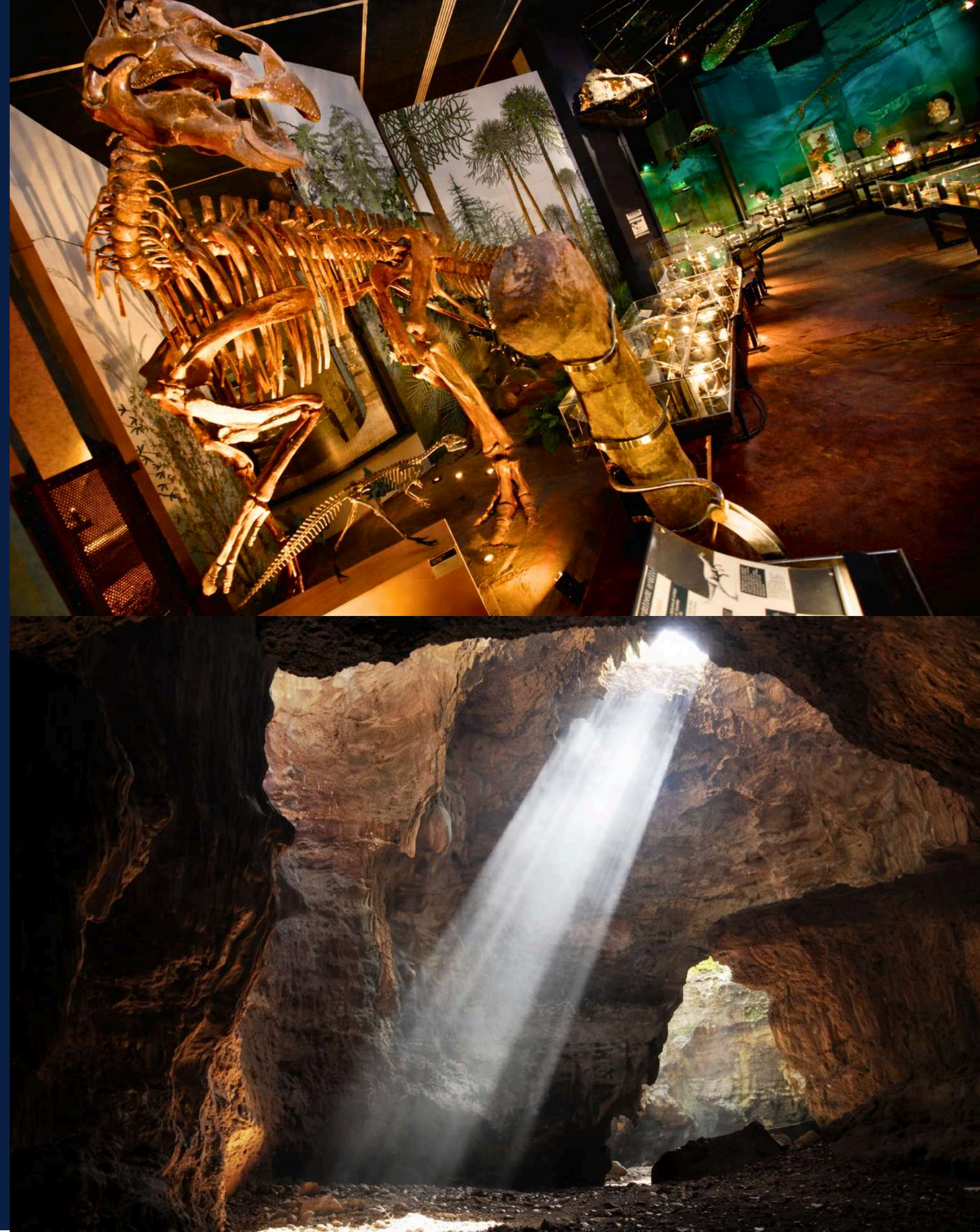
#### Arrival in Cardiff Capital Heritage

Arrival at Cardiff Airport where your driver guide welcomes the group and transfers them into the Welsh capital. The programme begins with timed entry admission to Cardiff Castle exploring its Roman foundations Norman keep and Victorian apartments. Lunch is reserved at The Potted Pig Restaurant in the historic city centre. In the afternoon enjoy admission to the National Museum Cardiff presenting Welsh art and natural history collections followed by entry to St Fagans National Museum of History an open air heritage site showcasing traditional Welsh buildings. Dinner is arranged at Heaneys Restaurant. Overnight in Cardiff.

### DAY 2

#### Brecon Beacons National Park

Depart Cardiff travelling north into the landscapes of Brecon Beacons National Park. The morning includes admission to the National Showcaves Centre for Wales exploring limestone caverns and geological formations. Continue with entry to Brecon Cathedral and Heritage Centre presenting the region ecclesiastical and cultural history. Lunch is reserved at The Felin Fach Griffin Restaurant known for countryside dining. In the afternoon enjoy admission to Penderyn Distillery Visitor Centre where guided tours introduce Wales whisky production. Dinner is arranged at The Walnut Tree Restaurant. Overnight in Brecon.



## Day by Day Programme

### DAY 3

#### Castles of South Wales and Departure

Depart Brecon travelling south through the countryside. The morning features timed entry admission to Caerphilly Castle one of Britain largest medieval fortresses surrounded by defensive waterworks. Continue with entry to Castell Coch a Victorian castle set within woodland outside Cardiff. Lunch is reserved at The Old House Restaurant overlooking the countryside. In the afternoon enjoy admission to the Rhondda Heritage Park Mining Experience presenting Wales industrial and cultural legacy before transfer to Cardiff Airport for onward departure.



## Inclusions & Operational Notes

---

---

### Programme Highlights

- Cardiff historic capital and cultural landmarks
- Brecon Beacons landscapes and countryside heritage
- Welsh distillery experience and local traditions
- Caerphilly Castle and Castell Coch heritage sites
- Industrial heritage and mining history
- Curated premium dining throughout the journey

### Journey Concepts

- Short duration programme with high impact delivery
- Seamless routing within South Wales
- Strong focus on reward driven experiences
- Combination of nature heritage and industrial legacy
- Efficient pacing with premium inclusions
- Designed for incentive and corporate travel

---

---

### Programme Inclusions

- Four star centrally located accommodation
- Daily breakfast throughout the programme
- Selected premium dining experiences
- Executive coach transportation with driver guide
- Professional English speaking guides where required
- Timed entry to all listed heritage sites and attractions
- Distillery visit and tasting experience
- Meet and assist services on arrival and departure
- Full ground handling and operational management

### Exclusions

- International flights
- Travel insurance
- Meals not specified
- Personal expenses
- Gratuities

### Suggested Extentions

- Pembrokeshire coastal landscapes
- Extended Brecon Beacons exploration
- Snowdonia National Park extension
- Luxury countryside retreat

## Partner with Interopa

Every programme can be refined to suit your market, travel style and group profile.  
Contact our team to receive detailed pricing, customisation options and departure availability.

Scan the QR code for programme specifications  
or contact us directly:



[operations@interopa.co.uk](mailto:operations@interopa.co.uk) ↗

[www.inetropa.co.uk](http://www.inetropa.co.uk) ↗

**Exclusively Designed and Operated by Interopa**

UK & Ireland Inbound Destination Specialists Since 1974